

# Project Summary - 18

## C.R.I. 5 HP Solar Pumping System

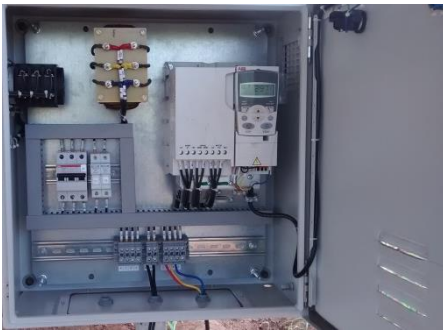


**C.R.I. PUMPS**  
Pumping trust. Worldwide.



### Location

Geo location: Hubli, Karnataka  
Latitude : 10.6700 N  
Longitude : 77.0200 E



### System Components

- 300Wp x 21 Nos. \*\*(5100 Wp) Multi-Crystalline
- 5HP Solar Pump Control Unit
- Fixed Tilt Ground Mounted Module Mounting Structures, North to South (Solar PV module Top to Bottom)
- 5 HP Bore well Pump set 3 Phase, 380 Volts, 50 Hz Supply
- Area occupied: 38 Sq. meters of shadow free area
- Tilt Degree: 10° as per the Geo location of the installation

### Results

- Flow: 5,400 m<sup>3</sup>/hr, 29,700 LPD\* at 130 m\* Total Dynamic Head
- Per year Running Cost by EB Grid Supply: Rs.18,150/=\* Payback period 10-11Years\*
- Per year Running Cost by Diesel Genset / Diesel Pumpset: Rs.59,400/\* Payback period 2-3 Years

\* Conditions apply

